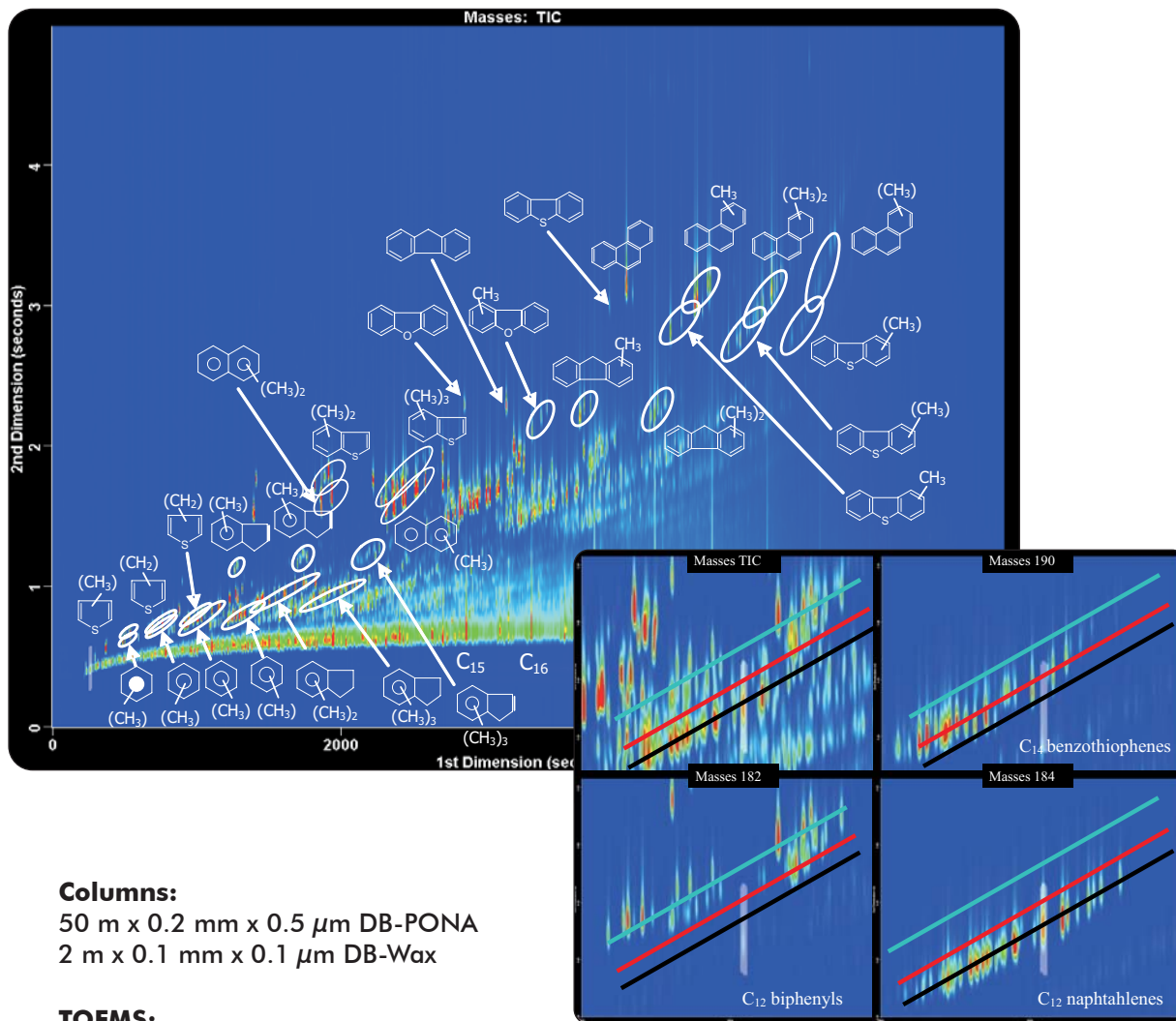


Analysis of Sulfur Containing Compounds in Diesel by GCxGC-TOFMS

Life Science and Chemical Analysis Centre
LECO Corporation, Saint Joseph, Michigan USA

Application Snapshot



Columns:

50 m x 0.2 mm x 0.5 μ m DB-PONA
2 m x 0.1 mm x 0.1 μ m DB-Wax

TOFMS:

35 to 500 m/z @ 100 spectra/s

For questions on this analysis
e-mail us at: life_science@leco.com

For a complete listing of snapshots
and application notes visit us on the
web at www.leco.com



LECO