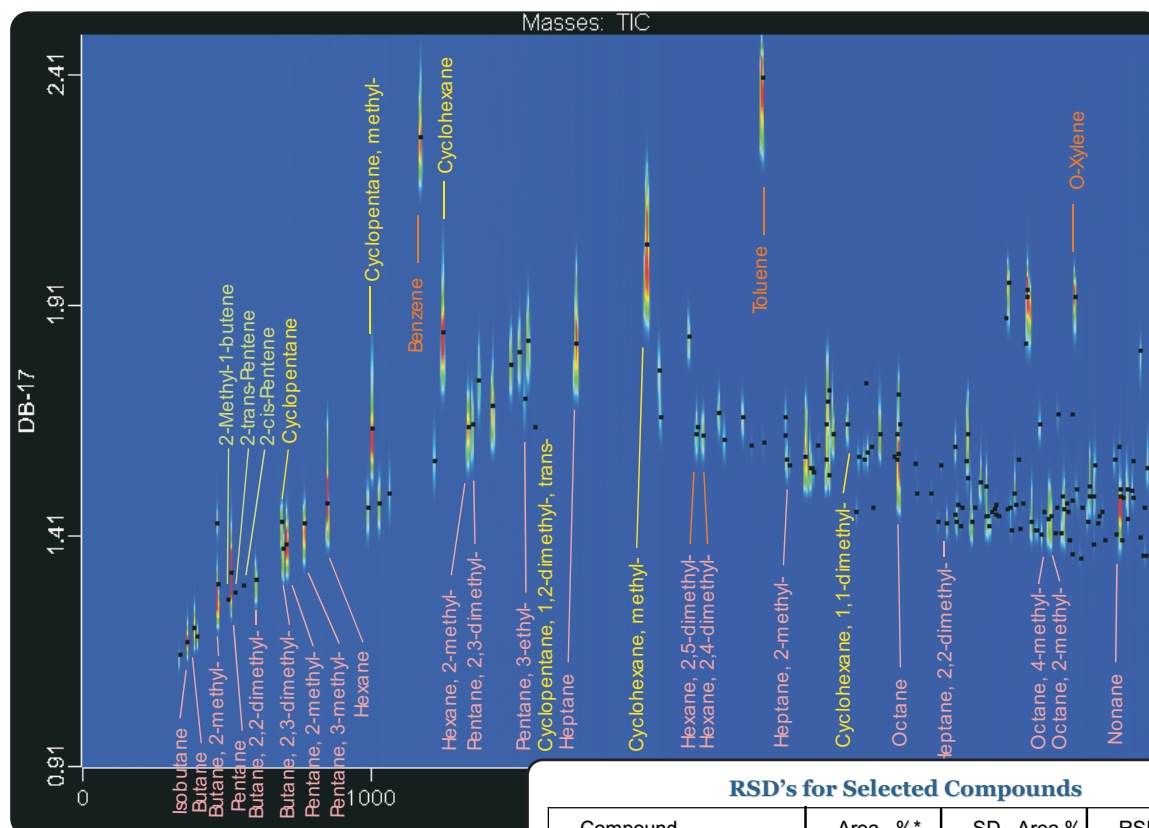


Analysis of Petroleum Naphthas by GCxGC-TOFMS

Life Science and Chemical Analysis Centre
LECO Corporation, Saint Joseph, Michigan USA



RSD's for Selected Compounds

Compound	Area %*	SD Area %	RSD Area %
Butane	0.94	0.011	1.16%
2-Methyl-1-butene	0.01	0.0015	19.6%
2-trans-Pentene	0.01	0.0026	28.5%
Butane, 2,3-dimethyl-	1.56	0.058	3.75%
Methyl Cyclopentane	5.11	0.030	0.58%
Benzene	5.02	0.052	1.03%
Cyclohexane, methyl-	12.9	0.033	0.25%
Toluene	8.06	0.17	2.10%

* Percent of total area of peaks labeled in figure above

Columns:

20 m x 0.18 mm x 0.4 μ m DB-1
2 m x 0.1 mm x 0.1 μ m DB-17

TOFMS:

35 to 334 m/z @ 200 spectra/s

For questions on this analysis
e-mail us at: life_science@leco.com

For a complete listing of snapshots
and application notes visit us on the
web at www.leco.com



Application Snapshot

