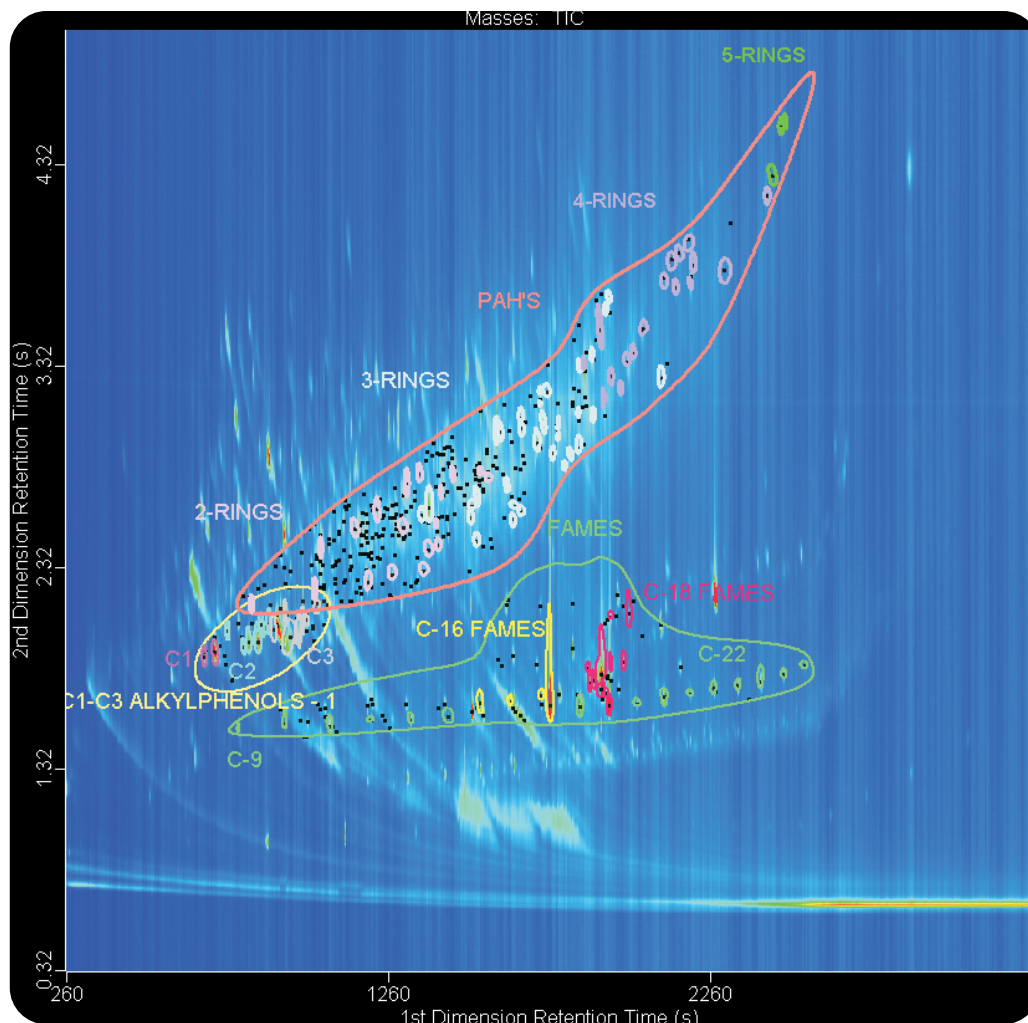


Analysis of Biodiesel by GCxGC-TOFMS with Classifications

Life Science and Chemical Analysis Centre
LECO Corporation, Saint Joseph, Michigan USA



Data Processed for designated Classification Regions: PAH's, Alkylphenols, and FAMES

Columns:

30 m x 0.25 mm x 0.25 μ m Rtx-1ms
1.5 m x 0.18 mm x 0.18 μ m DB-17ms

TOFMS:

45 to 550 m/z @ 200 spectra/s

For questions on this analysis
e-mail us at: life_science@leco.com

For a complete listing of snapshots
and application notes visit us on the
web at www.leco.com

