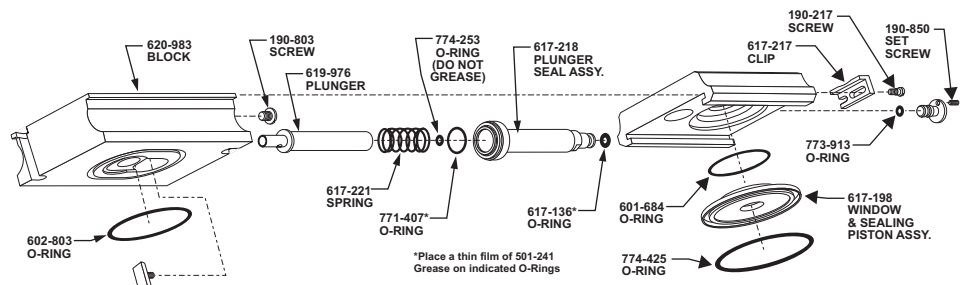
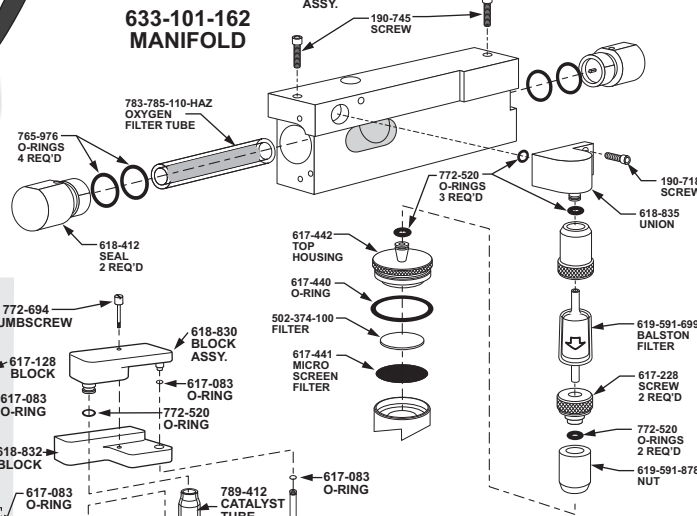


# TC/TN/RO-400/500/600-Series Consumables & Spare Parts Reference Card

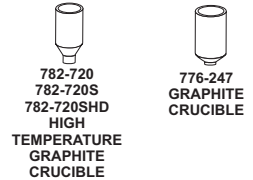
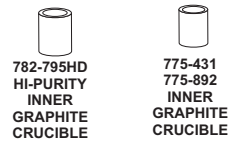
Note: Part numbers and standards' values may change. Consult LECO for the latest information.



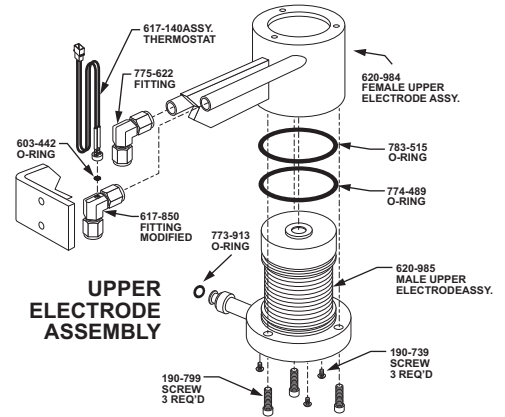
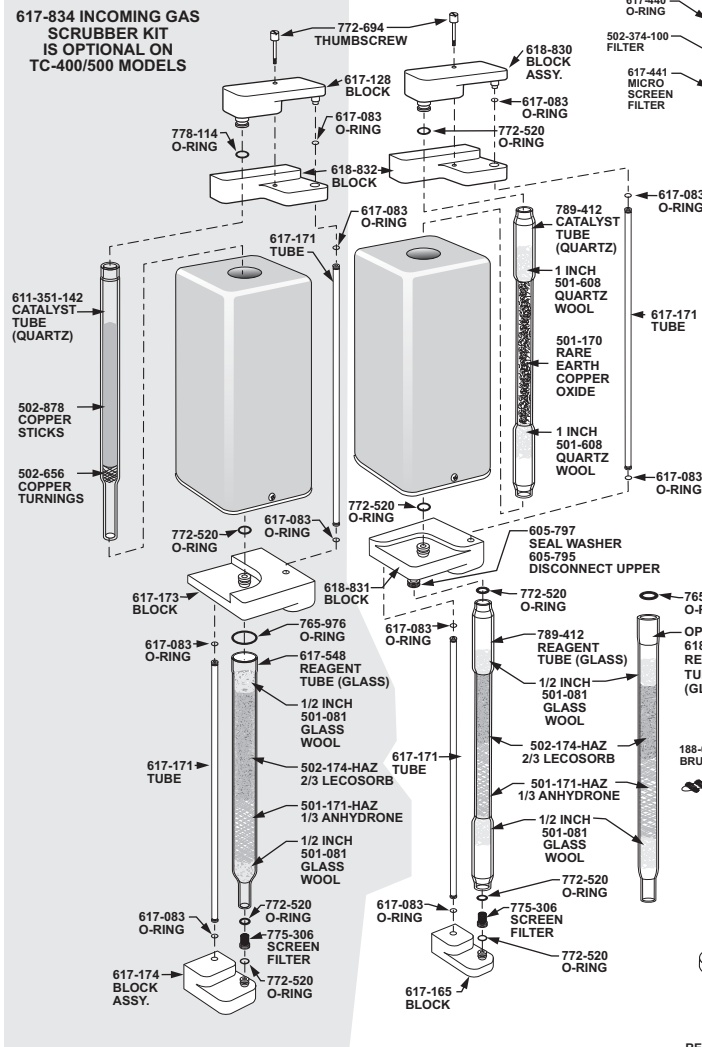
**633-101-162 MANIFOLD**



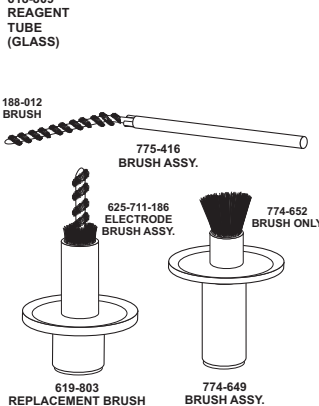
**775-433  
782-703  
OUTER GRAPHITE CRUCIBLE**



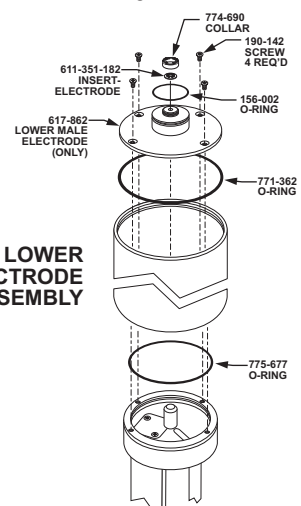
**617-834 INCOMING GAS SCRUBBER KIT IS OPTIONAL ON TC-400/500 MODELS**



**UPPER ELECTRODE ASSEMBLY**



**LOWER ELECTRODE ASSEMBLY**



See reverse side for contact information

**FUSION SUPPLIES**

501-598 Etchable Nibbled Nickel 100 g bottle  
501-073 Graphite Powder 100 g bottle  
618-376\* High Temperature Electrode Insert (required for  
782-720 Crucibles)  
502-040 Large Tin Capsule 100/bottle  
774-693 Lower Electrode Assembly, requires 775-312 O-ring,  
includes: 617-862 Electrode, 611-351-181 Electrode Insert,  
774-690 Knurled Ring (Collar)  
502-822 Nickel Capsule 100/bottle  
763-029 1.5 g Nickel Baskets 100/bottle  
502-345 1.5 g Nickel Baskets Ultra High Purity 100/bottle  
502-344 1.0 g Nickel Baskets Ultra High Purity 100/bottle  
501-059 Small Tin Capsule 100/bottle

*\*Not part of 774-693 Assembly*

**CATALYSTS AND REAGENTS**

501-171-HAZ Anhydrous 454 g (1 lb.) bottle  
502-705 Copper Sticks 100 g ampule  
502-878 Copper Sticks 100 g bottle  
502-656 Copper Turnings 60 g bottle  
501-170 Rare Earth Copper Oxide 50 g bottle  
501-081 Glass Wool 454 g (1 lb.) box  
501-073 Graphite Powder 100 g bottle  
502-174-HAZ Lecosorb 500 g bottle, 20-30 mesh  
502-176-HAZ Lecosorb 500 g bottle, 8-20 mesh

**OPERATION ACCESSORIES**

766-053 Crucible Tweezers  
766-646 Air Filter Coating  
775-306 Secondary Filter, 10 micron  
775-307 Screen Filter Removal Tool (Thumbscrew)  
625-711-599 Coolant Additive  
764-078 One gram Weight  
783-785-110-HAZ Replacement OMI Tube  
760-138 Sample Tweezers (Straight)  
501-241 Vacuum Grease  
767-473 Utility Funnel  
620-760 Vacuum Filter (Ash Vac)  
618-809 Medium Reagent Tube (Glass)

*NOTE: Part numbers may change.  
Consult LECO for latest information.*

*Please Note: Quartz Tubes are typically utilized for higher  
temperature applications (i.e. catalyst tubes). Glass reagent/filter tubes  
are designed for lower temperature applications. Glass tubes should  
not be used in place of quartz tubes.*