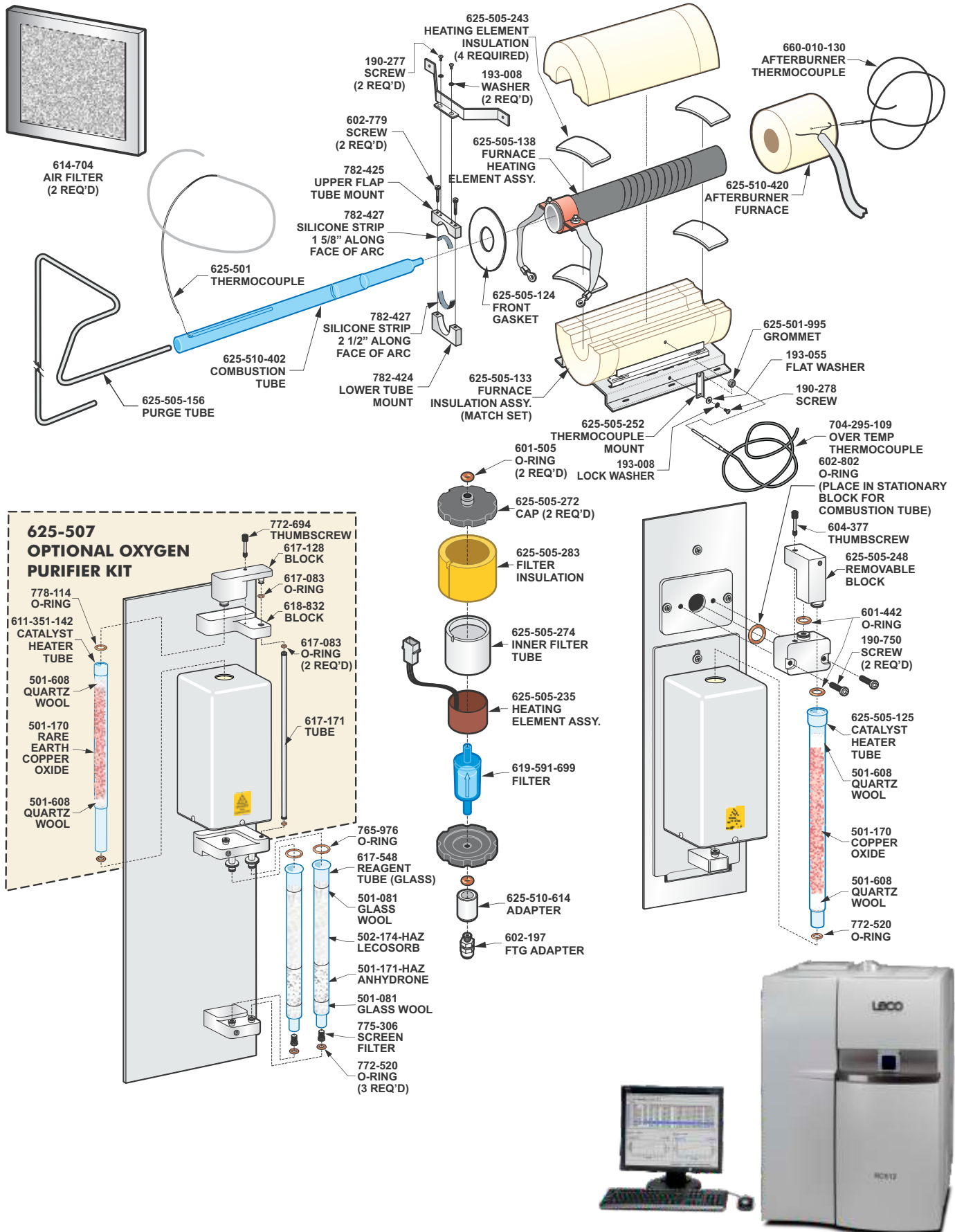


LECO RC612

EMPOWERING RESULTS

Consumables & Spare Parts Reference Card

Note: Part numbers and standards' values may change. Consult LECO for the latest information.



OPERATING SUPPLIES

781-335 Quartz Boat
782-059 Nickel Boat Liner (10/pkg)
625-510-402 Combustion Tube
625-505-430 Nickel Boats (50/pkg)

CATALYSTS AND REAGENTS

501-171-HAZ Anhydrous 454 g (1 lb.) bottle (10-16 mesh)
501-170 Copper Oxide 50 g bottle
502-156 Fluorhib (1 lb.)
502-493 Fluorhib HP (35 g)
501-081 Glass Wool 454 g (1 lb.) bottle
502-174-HAZ Lecosorb 500 g bottle, (20–30 mesh)
502-176-HAZ Lecosorb 500 g bottle, (8–20 mesh)
501-608 Quartz Wool 200 g bottle

REAGENT TUBES

617-548 Glass Anhydrous Tube, requires two
772-520 O-rings
625-505-125 Quartz Catalyst Heater Tube, requires two
772-520 O-rings

OPERATION ACCESSORIES

780-044 Boat Puller Assembly
761-929 Crucible Tongs
782-508 Quartz Wool Puller/Packing Tool Assembly
501-614 Spatula
625-505-137 Quartz Boat Tweezer

MAINTENANCE PARTS KITS

104-173 RC612 Maintenance Parts Kit

Please Note: Quartz Tubes are typically utilized for higher temperature applications (i.e. catalyst tubes). Glass reagent/filter tubes are designed for lower temperature applications. Glass tubes should not be used in place of quartz tubes.

REFERENCE MATERIALS AND STANDARDS

Current part numbers and values for LECO Reference Materials and Standard (209-296) can be found at <https://www.leco.com/consumables>