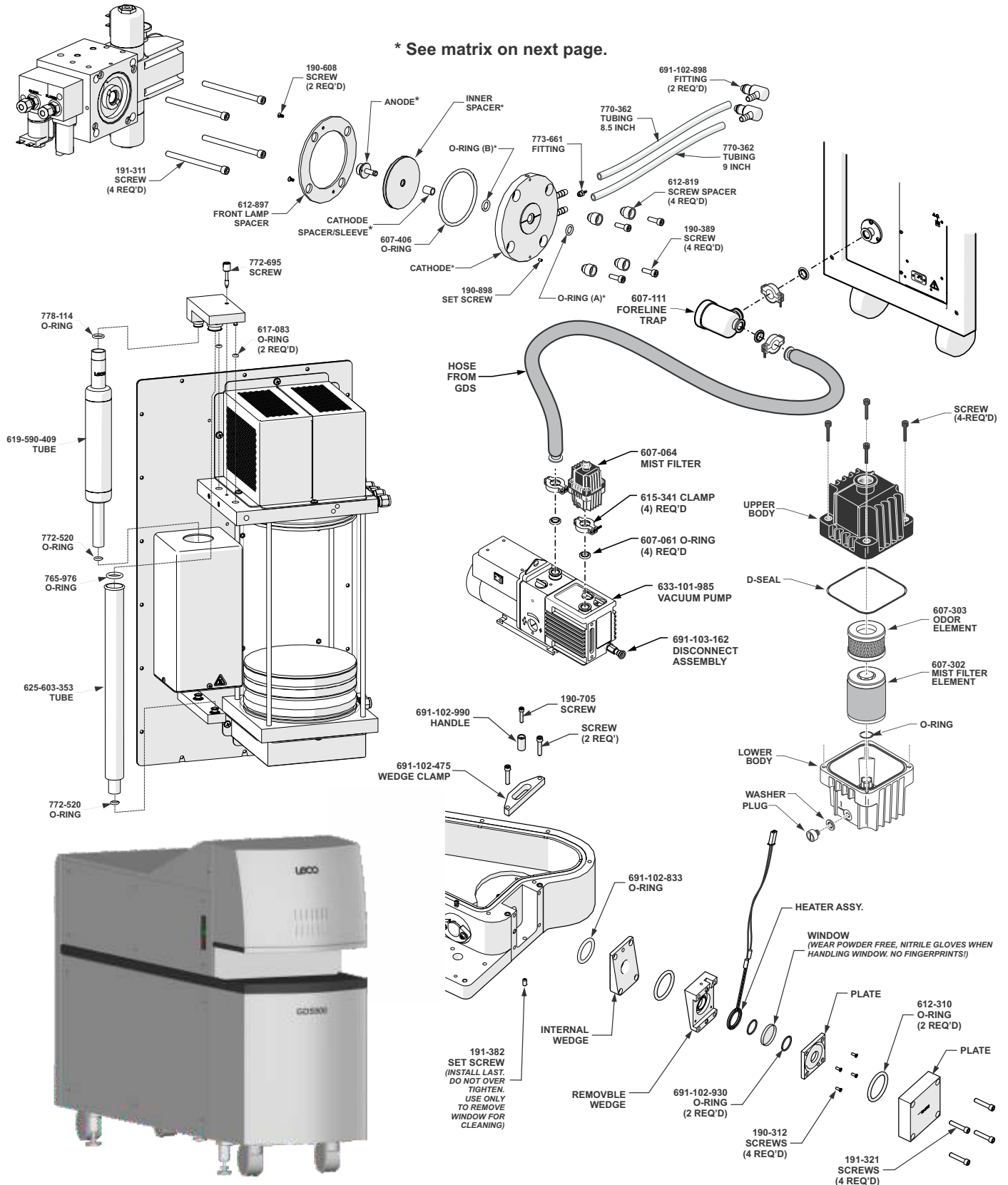


Note: Part numbers and standards' values may change. Consult LECO for the latest information.



See reverse side for contact information

Lamp	Size	Cathode	Anode	Sleeve	O-ring A	O-ring B	Inner Spacer	Reamer Assy
DC	4 mm	691-103-361	612-815	691-103-350	607-315	534-356	618-296	621-339
DC	2 mm	691-103-361	612-823	691-103-350	607-315	534-356	618-296	607-769
DC	2 mm Small	691-103-321	618-386	691-103-351	609-114	618-382	618-297	618-384

Consumables and Supplies

502-234-HAZ Alcohol
502-237 Foam Wipes
502-259 Cleaning Pad
779-377 Vacuum Pump Oil
615-797 Cotton Swabs
502-629 Lens Tissues
612-879 4 mm Lamp Rebuild Kit
810-487 60 grit ZrO₂ Belts Box/5
810-499 120 grit ZrO₂ Belts Box/5
501-171-HAZ Anhydron
502-174-HAZ Lecosorb 20/30
502-878 Copper Sticks
501-241 Vacuum Grease
502-177 Quartz Wool
775-306 Screen Filter
502-233 Alumina Pellets
691-102-756 Window
691-103-266 Conditioning Piece LC1-A

PMA Kits

104-204 Standard PMA Kit
104-205 Extended PMA Kit

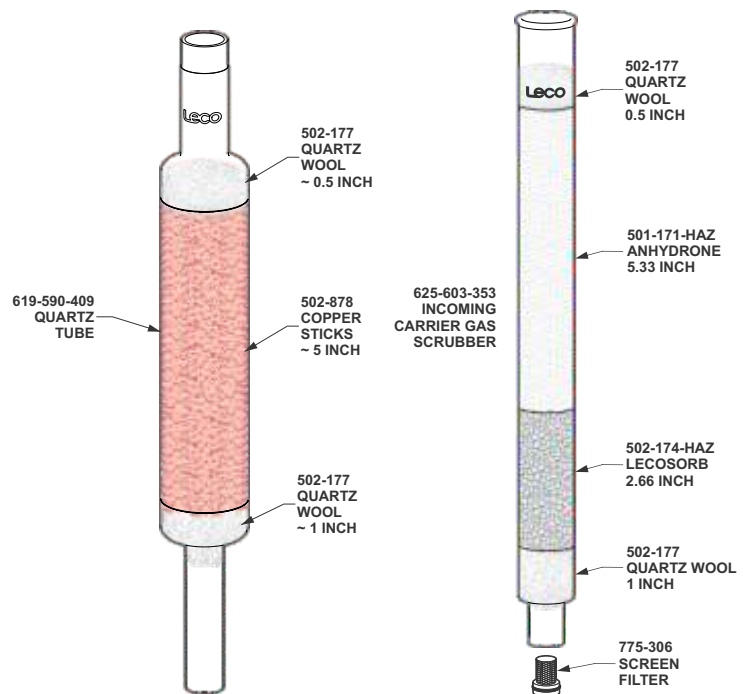
Tools

612-399 Anode Depth Gauge
607-309 Reamer Tool
691-101-505 Reamer Locking Tool
617-274 Sleeve Alignment Tool
612-799 4mm Sleeve Removal Tool
612-812 Anode Removal Tool
612-599 Anode Alignment Tool
633-103-149 Reamed Anode Alignment Tool
691-103-120 Wrench 7mm
762-515 O-Ring Removal Tool
691-102-947 Water Fill Tool
607-791 Oil Drain Tool
607-298 Chapman Ratchet Kit

Optional Accessories

633-103-354 Compressed Air (CGA 346)
2-Stage Pressure Regulator Kit
633-103-358 Inert Gas (CGA 580) 2-Stage
Pressure Regulator Kit
633-103-359 UHP In-Line (0 to 50) Pressure Regulator
with Bracket Kit
691-102-650 Kit Table GDS Integrated
691-102-856 Kit Workstation Sit/Stand
691-103-430 Porous Sample Holder
691-103-474 Porous Sample Holder for Powder Metals, TRS Bars
612-798 Sample Briquette Holder
612-933 4 mm Soft Material Reamer
691-103-425 3 mm Wire Sample Holder
691-103-306 Vacuum Pump Sound Abatement Enclosure

Please contact your local sales engineer for all your sample preparation needs.



NOTE: Part numbers and standards' values may change.
Consult LECO for latest information.

United States: 800-292-6141 • Canada: 800-268-0215 • Other Countries: 269-985-5496
info@leco.com • www.leco.com • ISO-9001:2015 Q-994 • © 2021 LECO Corporation

LECO
EMPOWERING RESULTS