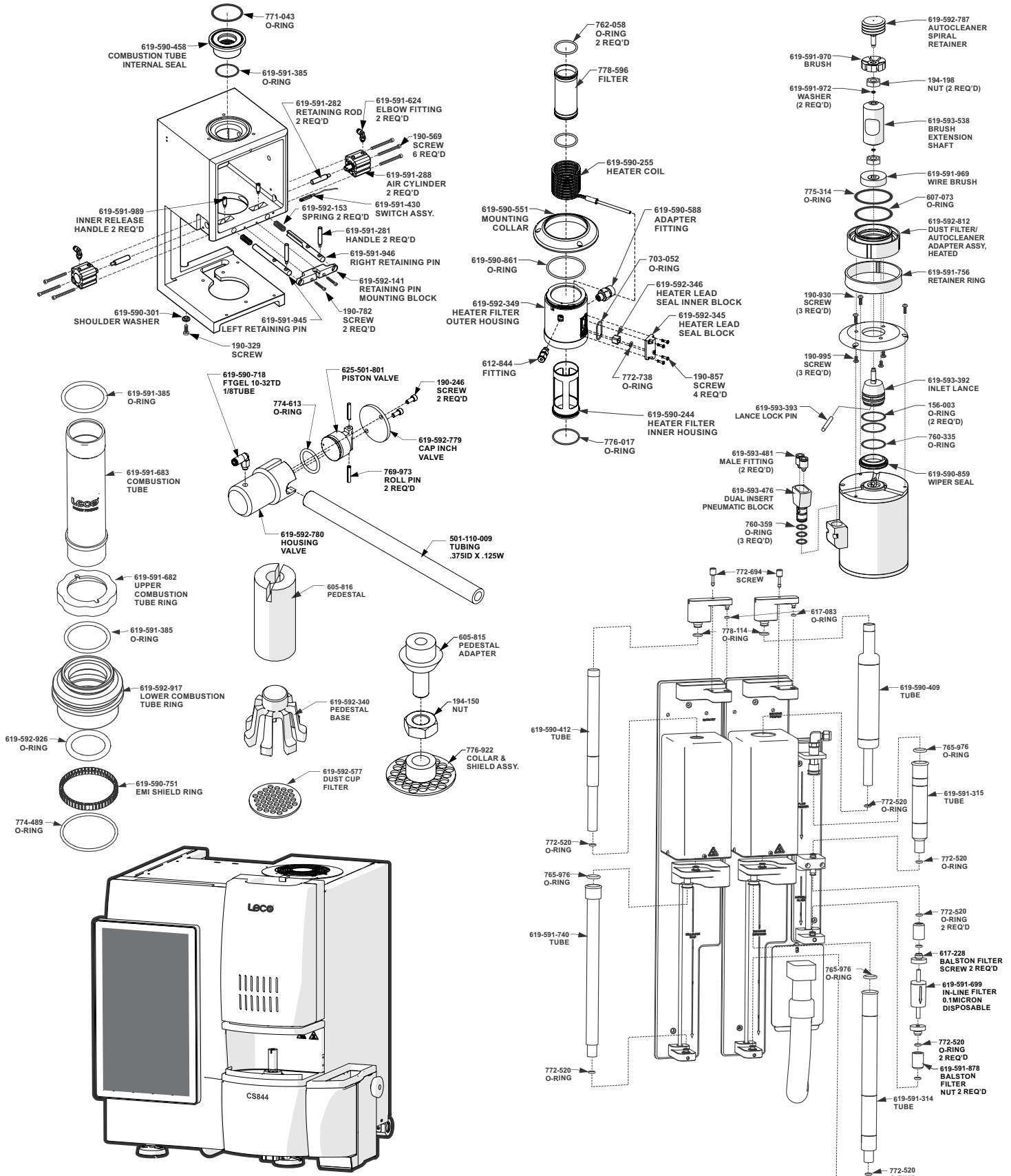


Note: Part numbers and standards' values may change. Consult LECO for the latest information.



See reverse side for contact information

## COMBUSTION SUPPLIES

|             |   |
|-------------|---|
| 528-018     | Ceramic Crucible 1000/box                       |
| 528-018HP   | High Purity Ceramic Crucibles 1000/box          |
| 528-050     | Ceramic Crucible 500/box, bags of 50            |
| 619-880     | Ceramic Crucible Cover with Hole, 1000/box      |
| 619-880-100 | Ceramic Crucible Cover with Hole, 100/box       |
| 619-591-683 | Combustion Tube (Quartz)                        |
| 778-596     | Dust Filter (SST Filter)                        |
| 619-593-443 | Lance Cleaning Wire                             |
| 619-591-970 | Lower Cleaning Brush (Reworked Brush)           |
| 762-058     | O-ring, Dust Filter                             |
| 605-816     | Silicon Nitride Pedestal                        |
| 619-591-622 | Vacuum Cleaner Filter; Disposable (Round Style) |
| 619-591-454 | Vacuum Cloth Bag Filter (Round Style)           |
| 619-591-456 | Vacuum HEPA Filter (Round Style)                |
| 782-880     | Filter (Square Style)                           |
| 619-593-542 | Vacuum Hose (Square Style)                      |
| 501-082     | Wire Cleaning Brush                             |

## ACCELERATORS

|         |   |
|---------|---|
| 502-492 | Copper Accelerator HP (0.44 lb./200 g)            |
| 501-263 | Copper Metal Accelerator 1.36 kg (3 lb.) bottle   |
| 501-640 | Copper Metal Accelerator 9 kg (20 lb.) container  |
| 501-264 | Copper Metal Accelerator, 227 g (0.5 lb.) bottle  |
| 502-231 | High Purity Iron Accelerator 454 g (1 lb.) bottle |
| 501-077 | Iron Chip Accelerator 0.9 kg (2 lb.) bottle       |
| 763-026 | LECOCEL® 13.6 kg (30 lb.) container               |
| 763-266 | LECOCEL® 2.27 kg (5 lb.) bottle                   |
| 502-297 | LECOCEL® II (30 lb./13.6 kg)                      |
| 501-008 | LECOCEL® II 2.27 kg (5 lb.) bottle                |
| 502-173 | LECOCEL® II HP 750 g (1.7 lb.) bottle             |
| 763-263 | LECOCEL® III 2.27 kg (5 lb.) bottle               |
| 763-027 | LECOCEL® III 13.6 kg (30 lb.) container           |

## CATALYSTS AND REAGENTS

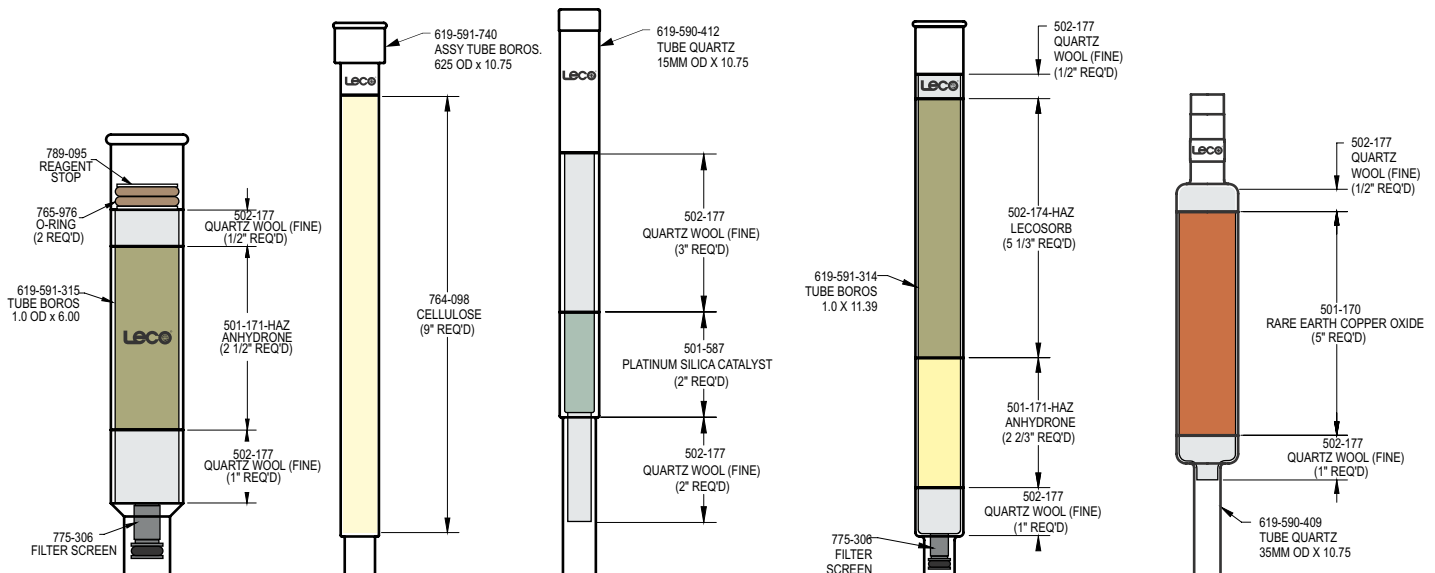
|             |                                     |
|-------------|-------------------------------------|
| 501-171-HAZ | Anhydron 454 g (1 lb.) bottle       |
| 764-098     | Cellulose 454 g (1 lb.) package     |
| 502-174-HAZ | Lecosorb 500 g bottle, 20–30 mesh   |
| 502-176-HAZ | Lecosorb 500 g bottle, 8–20 mesh    |
| 501-587     | Platinum/Silica 15 g bottle         |
| 502-177     | Quartz Wool 50 g package            |
| 501-170     | Rare Earth Copper Oxide 50 g bottle |

## REAGENT TUBES

|             |   |
|-------------|---|
| 619-590-412 | Quartz Tube, requires one (1) 778-114 O-ring and one (1) 772-520 O-ring for sealing |
| 619-590-409 | Quartz Tube, requires one (1) 778-114 O-ring and one (1) 772-520 O-ring for sealing |
| 619-591-740 | Glass Tube, requires one (1) 765-976 O-ring and one (1) 772-520 O-ring for sealing  |
| 619-591-314 | Glass Tube, requires one (1) 765-976 O-ring and one (1) 772-520 O-ring for sealing  |
| 619-591-315 | Glass Tube, requires one (2) 772-520 O-ring and one (1) 765-976 O-ring for sealing  |

## OPERATION ACCESSORIES

|             |  |
|-------------|--|
| 619-591-699 | Balston Filter                           |
| 761-929     | Crucible Tongs                           |
| 619-590-751 | EMI Gasket                               |
| 625-711-260 | Screen/Doser Removal Tool                |
| 775-306     | Secondary Filter, 10 micron              |
| 503-032     | Glass Accelerator Scoop                  |
| 773-579     | Metal Accelerator Scoop                  |
| 764-078     | One gram Weight                          |
| 760-138     | Sample Tweezers                          |
| 501-241     | Vacuum Grease                            |
| 502-023     | Tube Funnel                              |
| 762-515     | O-Ring Removal Tool                      |
| 502-237     | Cleaning Wipes                           |
| 619-592-597 | Dust Removal Tool                        |
| 614-704     | Cabinet Air Filter (6.5 x 7.0 x 0.47 AL) |



Please Note: Quartz Tubes are typically utilized for higher temperature applications (i.e. catalyst tubes). Glass reagent/filter tubes are designed for lower temperature applications. Glass tubes should not be used in place of quartz tubes.

NOTE: Part numbers and standards' values may change. Consult LECO for latest information.

United States: 800-292-6141 • Canada: 800-268-0215 • Other Countries: 269-985-5496  
info@leco.com • www.leco.com • ISO-9001:2015 Q-994 • © 2021 LECO Corporation

**LECO**  
EMPOWERING RESULTS