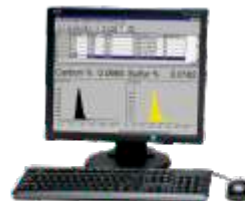
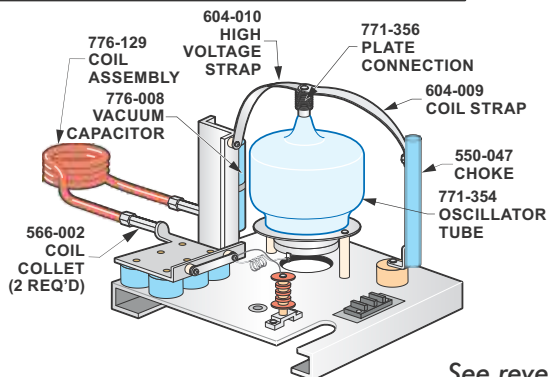
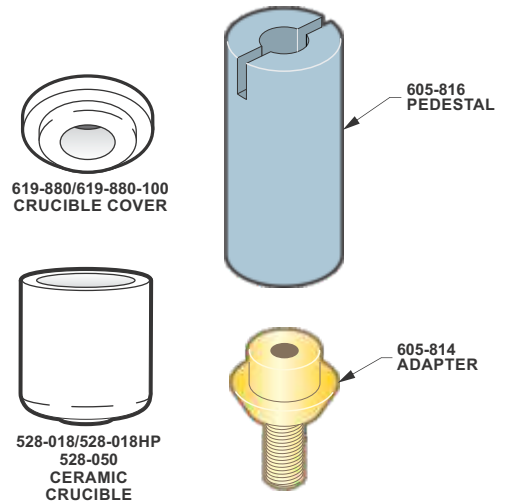
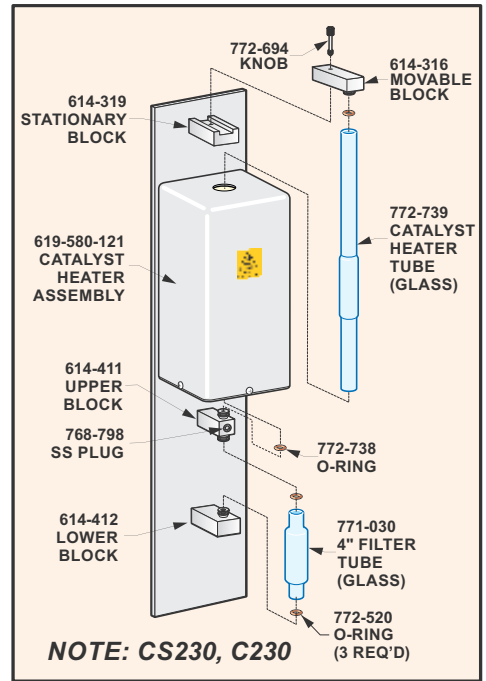
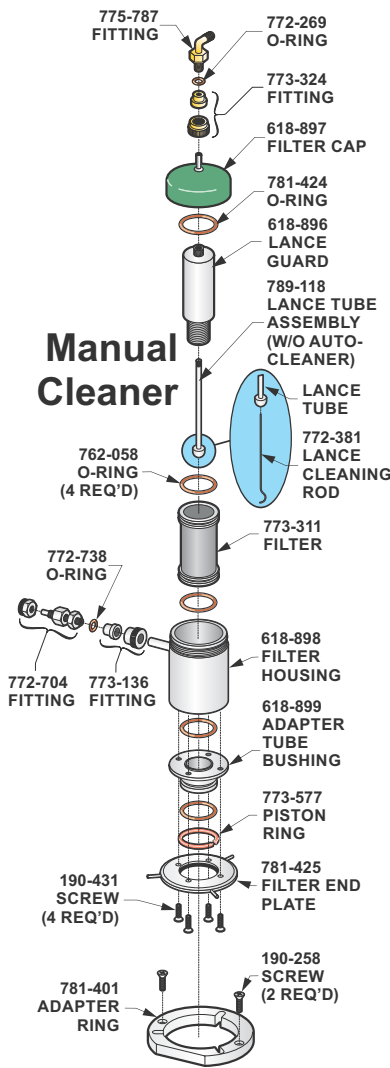
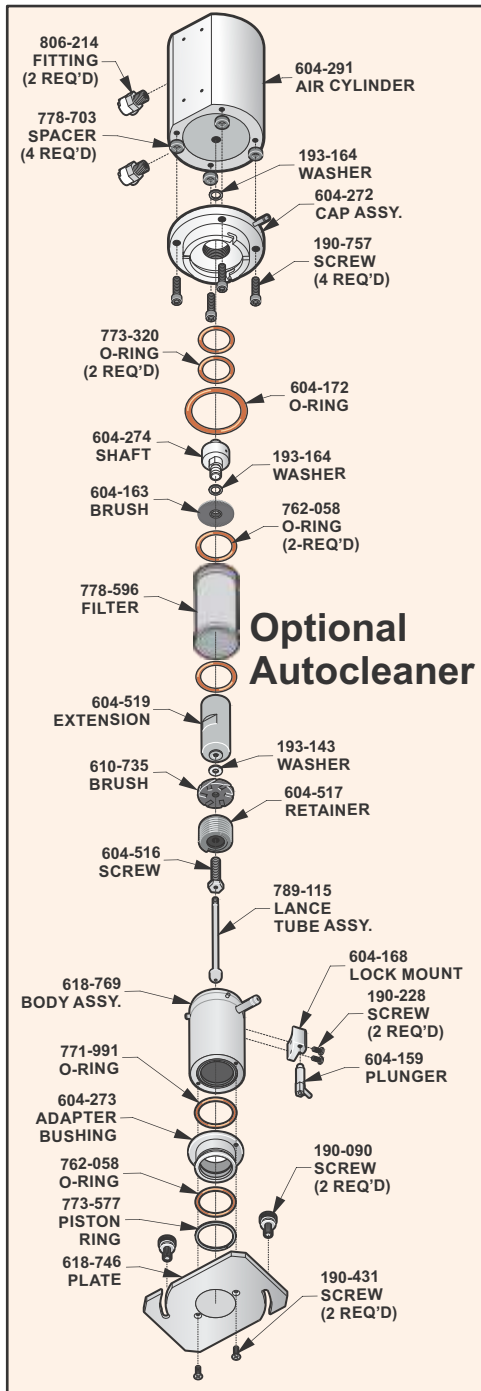


Note: Part numbers and standards' values may change. Consult LECO for the latest information.



See reverse side for contact information

COMBUSTION SUPPLIES

528-018	Ceramic Crucible 1000/box
528-018HP	0 Sulfur Blank 1000/box
528-050	Ceramic Crucible 500/box, bags of 50
619-880	Crucible Cover 1000/Box
619-880-100	Crucible Cover 100/Box
772-905	Combustion Tube (Quartz)
772-906	Combustion Tube Ring
601-920	O-ring (Bottom of Combustion Tube)
762-058	O-ring (Top of Combustion Tube)
501-082	Wire Cleaning Brush
789-118	Lance Tube Assembly (w/o Autocleaner)
789-115	Lance Tube Assembly (w/Autocleaner)

ACCELERATORS

502-492	Copper Accelerator HP (0.44 lb/200 g)
501-263	Cu Chip Accelerator (-10 +30 mesh) (3 lb/1.36 kg)
501-077	Fe Chip (2 lb/0.9 kg)
763-467	Fe Chip (25 lb/11.35 kg)
501-264	Cu Chip (0.5 lb/227 g)
502-231	HP Fe (1 lb/0.5 kg)
763-026	LECOCEL [®] (30 lb/13.6 kg)
763-266	LECOCEL [®] (5 lb/ 2.27 kg)
501-008	LECOCEL [®] II (5 lb/2.27 kg)
502-173	LECOCEL [®] II HP (1.7 lb/0.75 kg)
502-297	LECOCEL [®] II (30 lb/13.6 kg)
763-027	LECOCEL [®] III (30 lb/13.6 kg)
763-263	LECOCEL [®] III (5 lb/2.27 kg)

CATALYSTS AND REAGENTS

501-171-HAZ	Anhydron (1 lb/454 g)
764-098	Cellulose (1 lb/454 g)

501-081	Glass Wool (1 lb/454 g)
502-174-HAZ	Lecosorb (500 g–20/30 Mesh)
501-587	Platinum/Silica (15 g)
502-177	Quartz Wool (50 g)

REAGENT TUBES

601-390	Anhydron Tube (Glass)
772-739	Catalyst Heater Tube (Glass)
771-030	Cellulose Filter Tube (Glass)
605-700-087	O-ring Pack
771-373	Reagent Tube–Measure Flow (Glass)

ACCESSORIES

761-929	Crucible Tong
789-149	EMI Gasket
503-032	Glass Scoop
773-579	Metal Accelerator Scoop, SST
760-138	Sample Tweezers, Straight
775-306	Secondary Filter, 10 micron
501-241	Vacuum Grease

MAINTENANCE PARTS KITS

104-144	C/CS/S230 Maintenance Parts Kit
104-192	C/CS/S230 w/Manual Cleaner Maintenance Parts Kit
104-175	WC230 Maintenance Parts Kit

Please Note: Quartz Tubes are typically utilized for higher temperature applications (i.e. catalyst tubes). Glass reagent/filter tubes are designed for lower temperature applications. Glass tubes should not be used in place of quartz tubes.

REFERENCE MATERIALS AND STANDARDS

Current part numbers and values for LECO Reference Materials and Standard (209-296) can be found at <https://www.leco.com/consumables>

NOTES: Part numbers and standards' values may change. Consult LECO for latest information.

United States: 800-292-6141 • Canada: 800-268-0215 • Other Countries: 269-985-5496
info@leco.com • www.leco.com • ISO-9001:2015 Q-994 • © 2021 LECO Corporation

