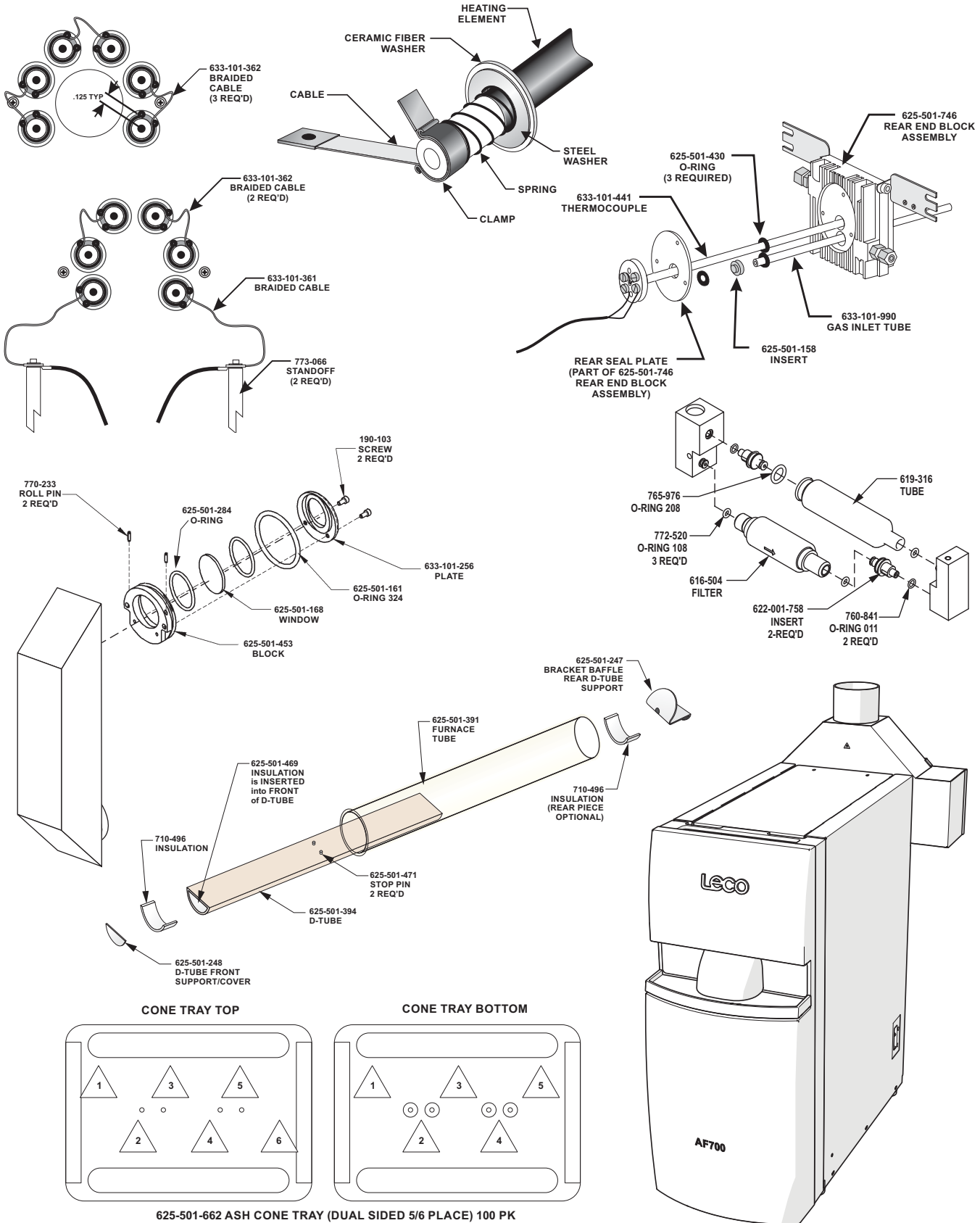


Note: Part numbers and standards' values may change. Consult LECO for the latest information.



See reverse side for contact information

**GENERAL OPERATING SUPPLIES**

625-501-431 Door Interlock Bypass Key  
 761-929 Tongs  
 625-501-662 Ash Cone Tray  
 (Dual sided, 5 and 6 place, 100/pkg)  
 776-957 Ash Cone Mold, ASTM D1857  
 625-501-363 Ash Cone Tray Tool  
 502-496 Gold Wire Calibration Standard  
 (6 in. x 0.2 in. diameter)  
 501-951 Nickel Wire Calibration Standard  
 (6 in. x 0.2 in. diameter)  
 502-010 Dextrin Solution  
 501-233-HAZ Ceramic Alumina Adhesive  
 625-501-471 Test Pin Tray (Metal)  
 763-265 Glass Wool (0.5 lb)  
 616-504 Filter (0.01 micron)

**FURNACE AREA AND GLASSWARE**

613-564 T-Clamp Expansion Tool  
 625-501-328 AF700 Replacement Heating Element Kit including:  
 (2) 633-101-361 Braided Wire w/Clip  
 (5) 633-101-362 Braided Wire  
 (2) 625-501-149 O-Ring  
 (12) 633-103-092 Ceramic Fiber Washer  
 (3) 625-501-430 O-Ring  
 (1) 625-501-464 Heating Element  
 (3/4 inch—6 in set)  
 (12) 625-501-470 Heating Element Clamp  
 (3/4 inch)  
 625-501-361 AF700 Replacement Furnace Tube Kit  
 including:  
 (2) 625-501-149 O-Ring  
 (1) 625-501-161 O-Ring  
 (2) 625-501-382 Ring Insulation  
 (1) 625-501-391 Mullite Furnace Tube  
 (3) 625-501-430 O-Ring  
 633-103-027 AF700 High Temperature Kit including:  
 (12) 190-728 Screws  
 (12) 193-055 Washer  
 (2) 625-501-149 O-Ring  
 (12) 633-103-092 Ceramic Fiber Washer  
 (2) 625-501-382 Ring Insulation  
 (3) 625-501-430 O-Ring  
 (1) 625-501-464 Heating Element Set  
 (3/4-inch—6 in set)  
 (2) 633-101-991 SST Braided Wire w/Clip  
 (5) 633-101-992 SST Braided Wire  
 (12) 194-172 Hex Nut  
 (1) 633-101-997 Alumina Furnace Tube  
 625-501-394 D-Tube  
 633-101-990 Mullite Furnace Gas Inlet  
 633-101-441 Furnace Thermocouple

*NOTES: Part numbers and standards' values may change.  
 Consult LECO for latest information.*